



204 W

204

150

138-149

Edna B

Montadoro 1

Oats Peak

Edna A

Pisism

Edna

Honolulu-Tidewater 1

Townsend-Gunter 1

Lion Rock

DCRP

Green Peak

SAN MIGUELITO

MIGUELITO FAULT

112-140

SHORELINE FAULT

Olson Hill

Port San Luis

Point San Luis

120° 50'

20° 45'

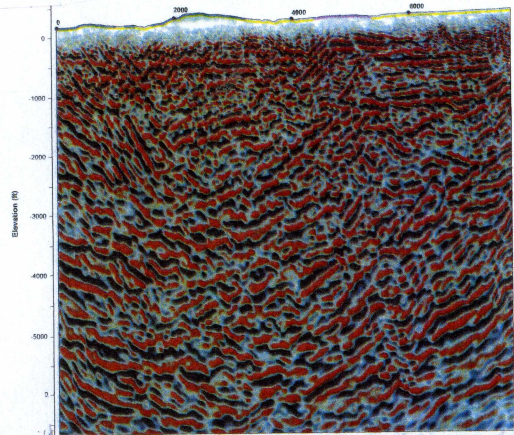
36° 10'



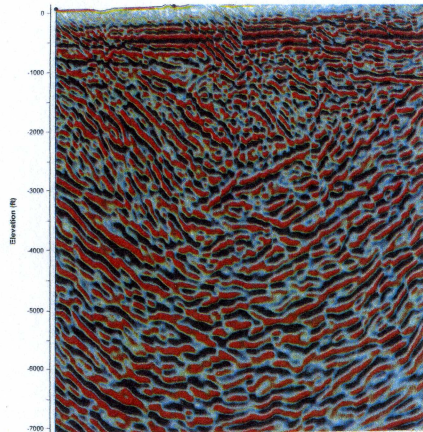
-120° 50'

120° 45'

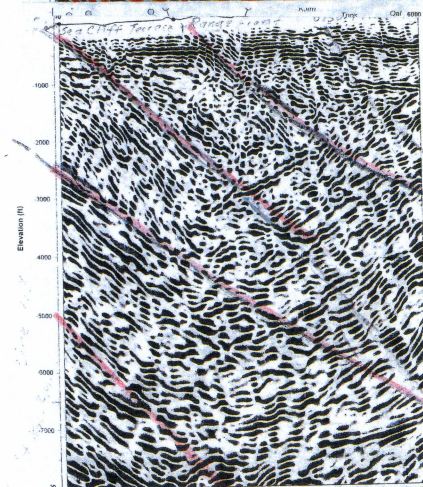
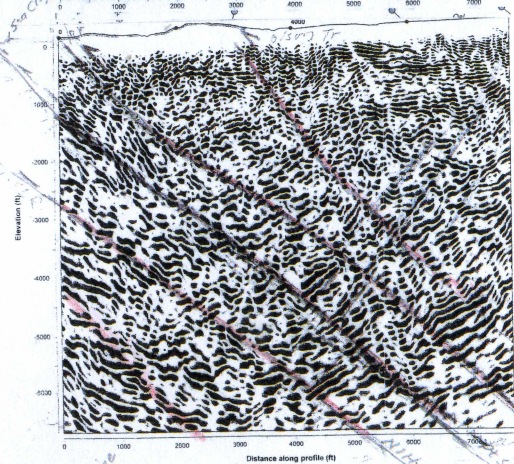
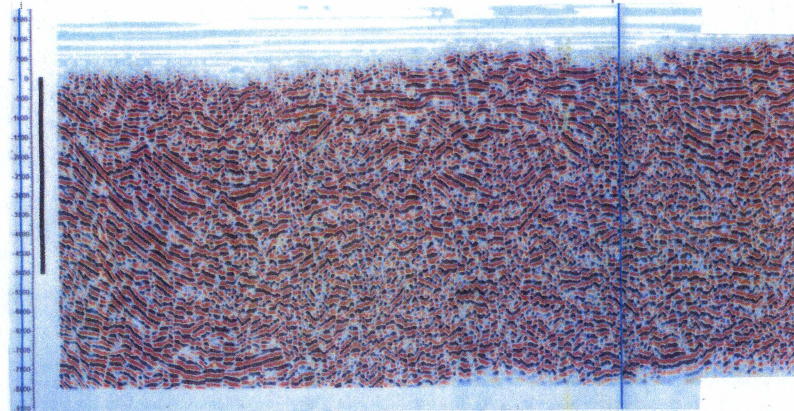
35° 10'



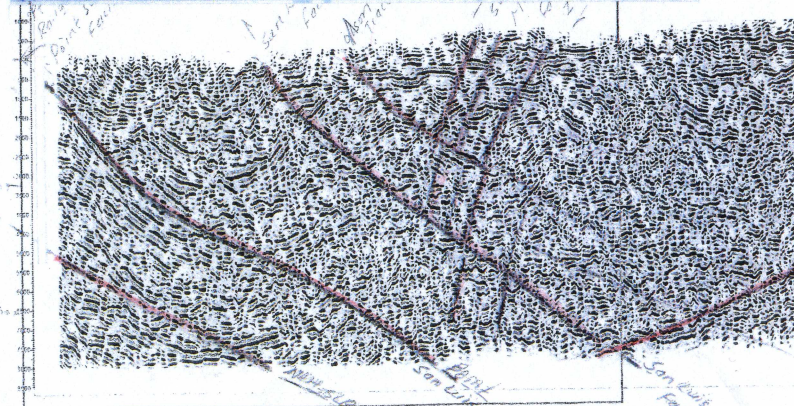
Line 114



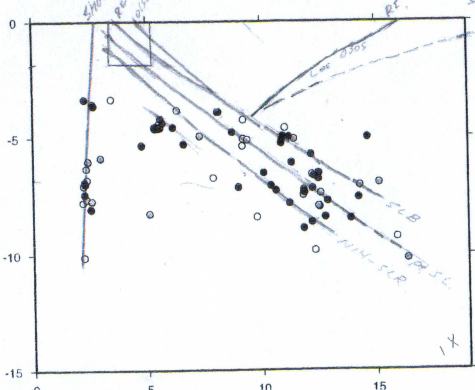
Line 113



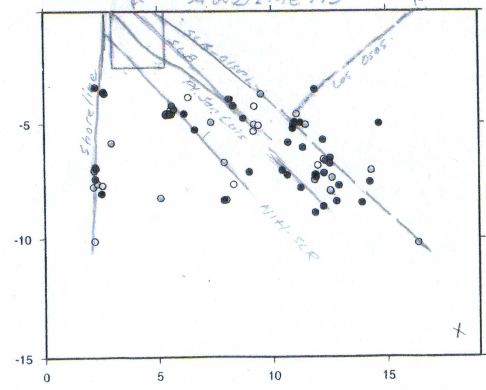
Line 113



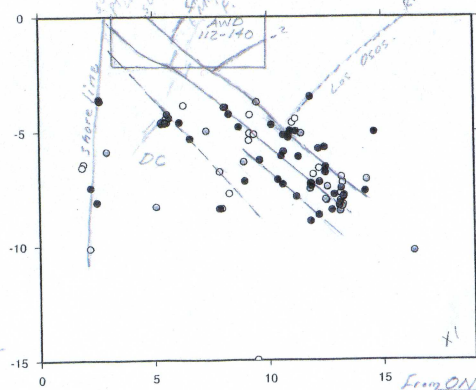
AWD Line 112-140



AWD Line 114



AWD Line 113



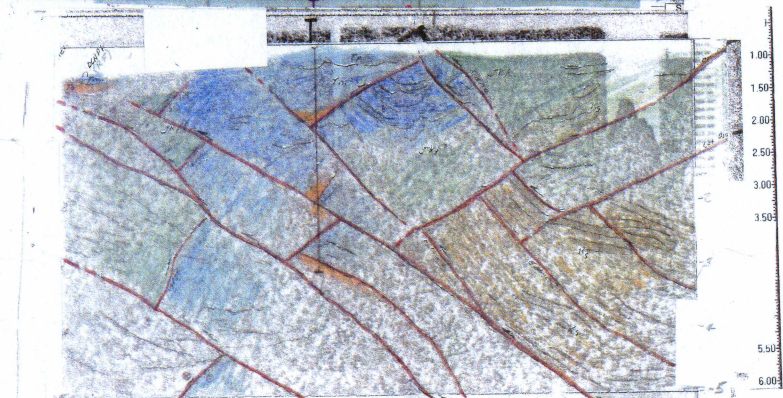
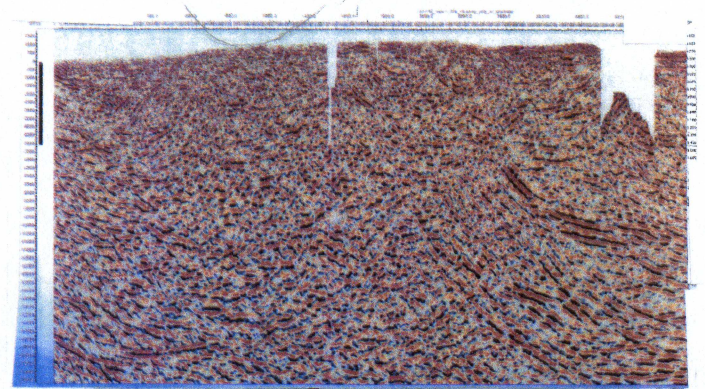
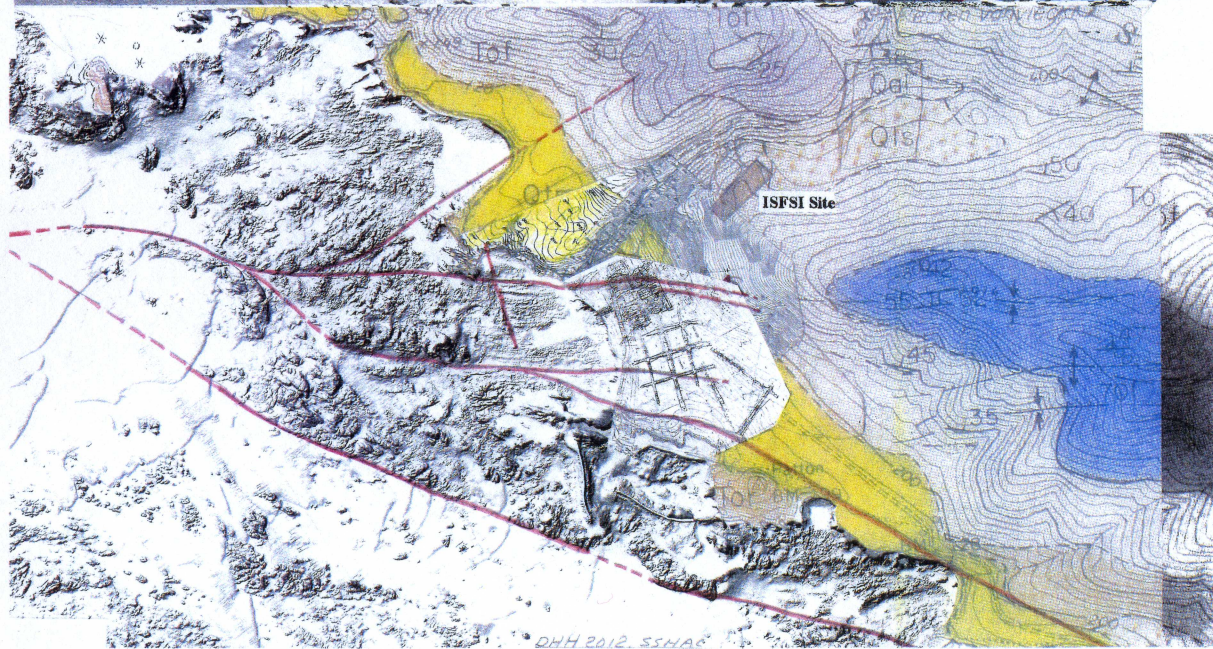
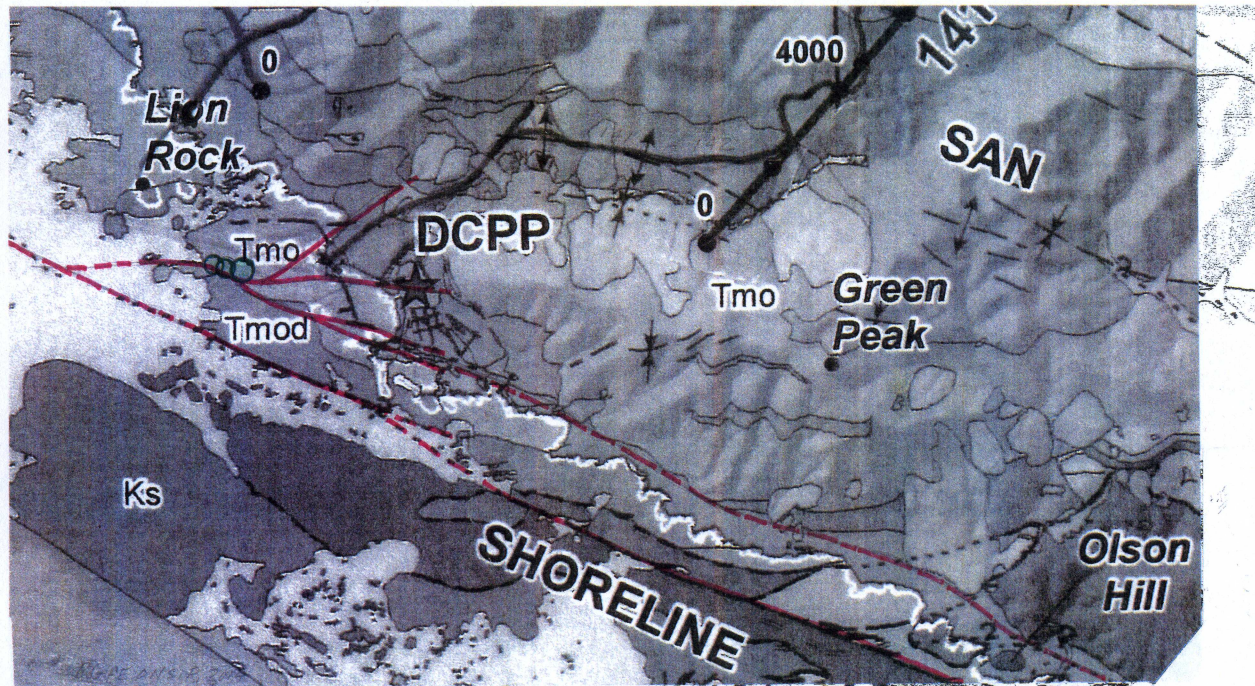
Seismic Reflection Images
From ONSIP Lines 112-140, 113, 114
Olson Hill - Point San Luis



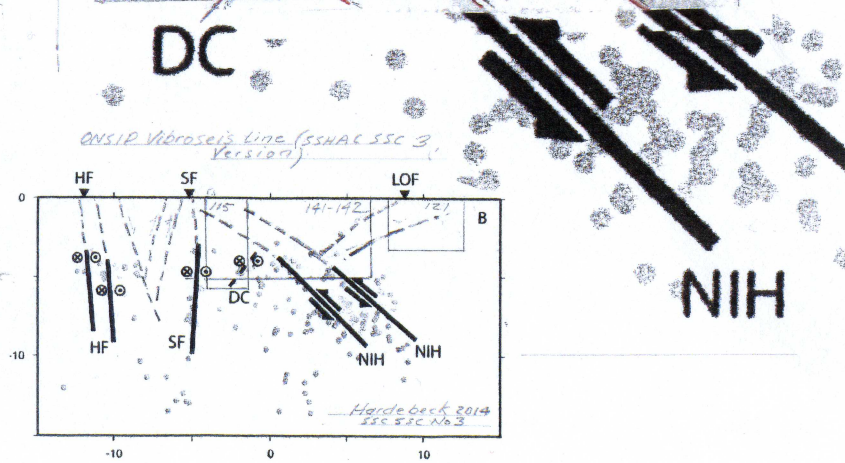
-120° 50'

120° 45'

35° 10'



DC



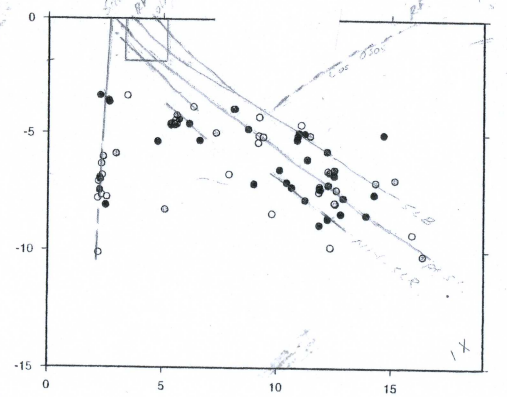
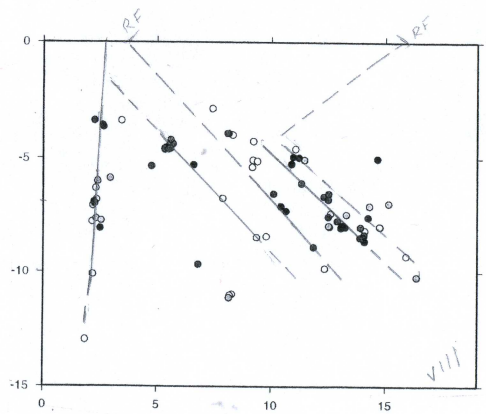
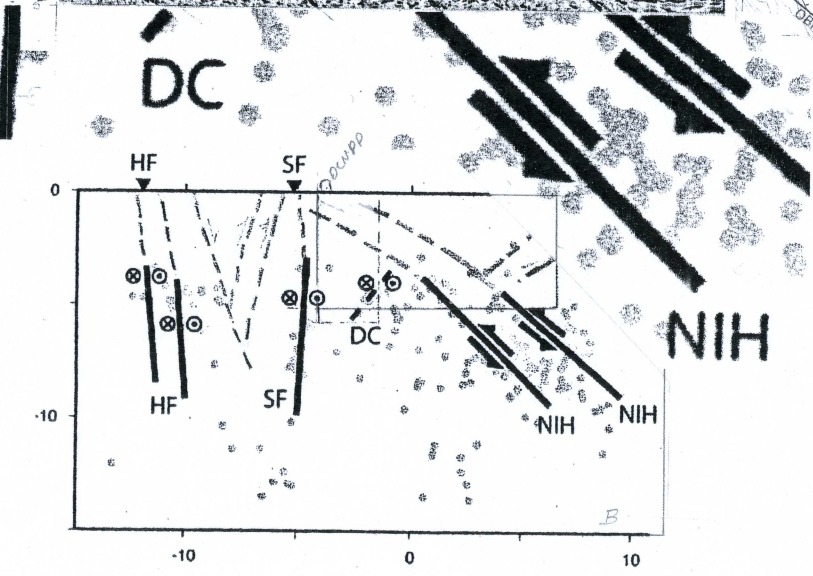
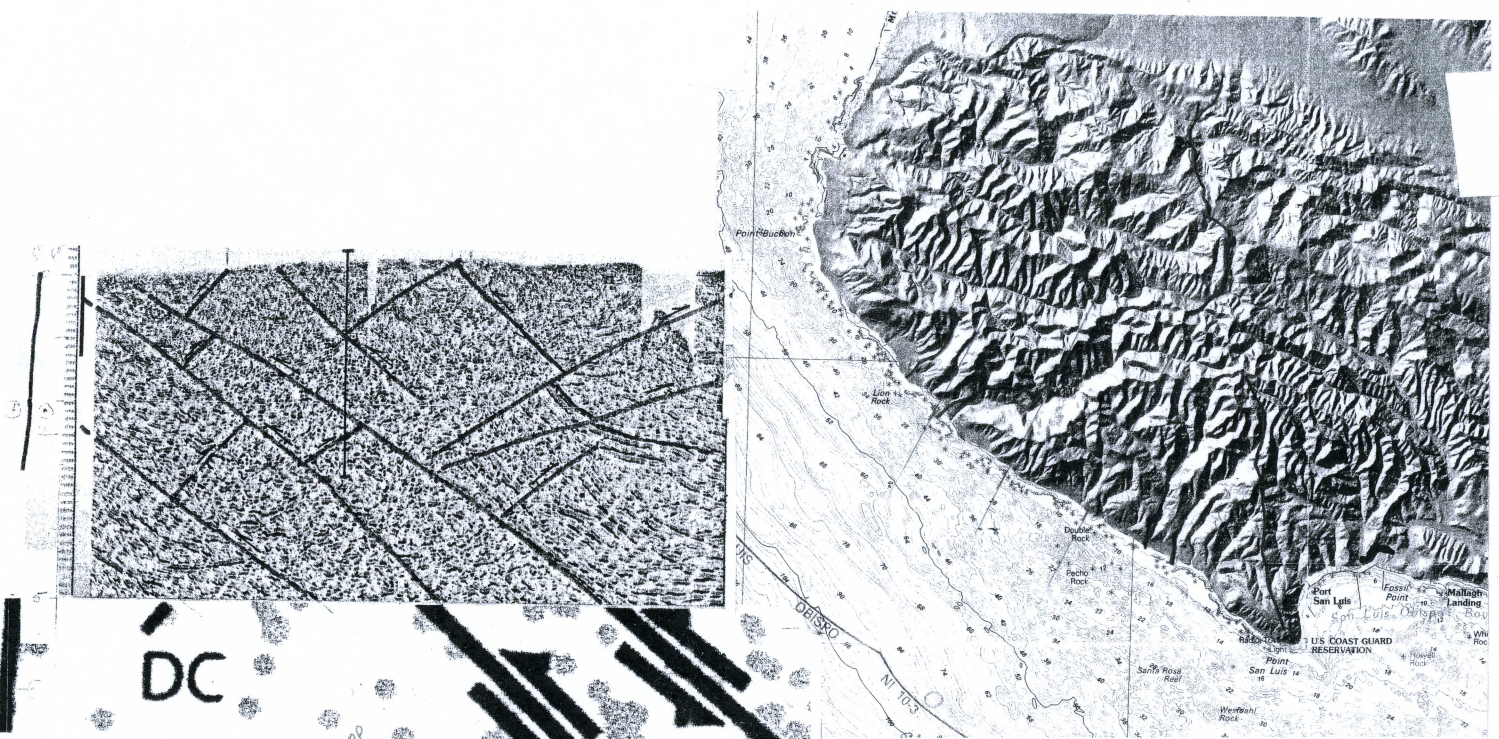
Seismic Reflection Line 141-142, Seismicity Hypocenter Profile B, and MBFS Keimley Sea Floor Image, Lion Rock - Olson Hill Area



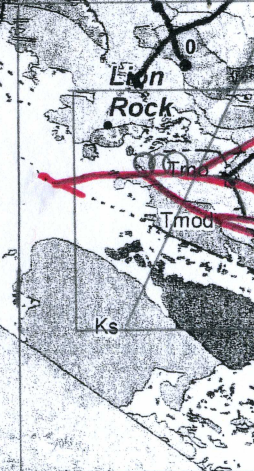
-120°50'

35°10'

20°45'



AWD Line 14
NIH-2R F



120° 50'

36° 10'